

# Helene devastated western North Carolina

**100+**

Fatalities in North Carolina alone, making Helene one of the deadliest US storms in the 21st century

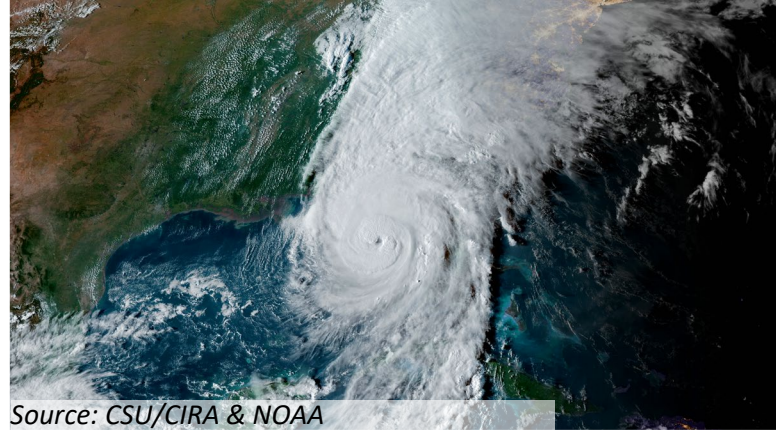
**4.6M**

North Carolinians in counties designated by FEMA for disaster assistance

**\$53.6B**

In total damage and needs in North Carolina

- **\$48.8B** in total damage – roughly 3x the impact of Hurricane Florence in 2018
- **\$4.8B** in additional strengthening and mitigation funding needed to reduce impact of future disasters



Source: CSU/CIRA & NOAA



Source: NC Department of Transportation



Source: NC Department of Transportation



Source: NC Department of Transportation



Source: NC Department of Public Safety

# North Carolina is requesting \$25.57 billion in federal aid to support Helene recovery

A preliminary assessment by the North Carolina Office of State Budget and Management estimates total damage and needs of \$53.6 billion<sup>1</sup>

Total Needs for Hurricane Helene Recovery in North Carolina (Million \$)*					
Category	Total Damage & needs (est. as of 10/23/24)**	Expected Private Insurance & Other Funding (est. as of 10/23/24)	State Funding as of 11/07/24	Federal Funding as of 11/12/24	Unfunded
Economy	\$15,915	\$1,480	\$56	\$10	\$14,369
Housing	\$14,749	\$2,639	\$101	\$231	\$11,779
Utilities & Natural Resources	\$6,709	\$1,442	\$134		\$5,133
Transportation	\$9,841	\$157	-	\$100	\$9,584
Agriculture	\$3,376	-	-		\$3,376
Government & Recovery Ops	\$1,422	\$223	\$413	\$197	\$589
Education	\$844	\$289	\$113		\$442
Health and Human Services	\$724	\$102	\$61	\$7	\$554
Tribal and Federal Lands	-	TBD	TBD		TBD
<b>Helene subtotal</b>	<b>\$53,580</b>	<b>\$6,333</b>	<b>\$877</b>	<b>\$545</b>	<b>\$45,825</b>

\* Numbers in the table might not add up due to rounding.  
 \*\* Additional data since 10/23/24 has caused estimates to change since publication of the Preliminary Damage and Needs Assessment, especially increasing the damage and needs in the Agriculture and Government & Recovery Operations categories.

North Carolina's federal funding request includes \$7.99 billion in eligibility-based funding and \$17.58 billion in new requests

Requested federal funding would equate to a 48% federal share of total damage and needs

Potential federal share of Helene recovery costs is broadly in-line with historical average of 44% and substantially lower than for Katrina, Sandy, and Maria

## Eligibility-based funding (Million \$)

Federal agency	Federal sub-agency	Federal ask
DHS	FEMA	\$ 6,759
SBA		\$ 1,231
Subtotal		\$ 7,990

## New requests (Million \$)

Federal agency	Federal sub-agency	Federal ask
DOT	FAA, FHWA, FRA	\$ 7,412
HUD		\$ 5,678
DHS	FEMA	\$ 1,750
USDA	USFS, FSA, NRCS, RD	\$ 1,666
EPA		\$ 270
DOD	USACE	\$ 201
DHHS	ACF, ASPR, OCFS	\$ 150
DOC	EDA, FCC, NIST	\$ 126
Education	FSA, OESE, OPE	\$ 107
DOI	NPS, USGS	\$ 90
DOE		\$ 75
DOL		\$ 40
Treasury		\$ 17
Subtotal		\$ 17,582

**Total potential federal support (Million \$) \$ 25,572**



# Department of Transportation

## Federal Funding Request: \$7.41 billion

Source: NC Department of Transportation

### Helene Impact on Transportation<sup>1</sup>

**\$8.5B**

Direct damage to transportation infrastructure

**\$100M**

Impact to state transportation revenue

**\$1.3B**

Strengthening and mitigation funding needed

**48%**

Share of roads in western North Carolina that are private

**5,000**

Miles of state roads damaged

**1,300+**

Public bridges and culverts damaged

---

### DOT Federal Funding Asks

**Purpose**

**Funding Ask (\$M)**

Rebuilding Interstates, Major Highways, and State Roads and Bridges

\$5,400

Rebuilding Municipal Roads and Bridges

\$1,550

Emergency Relief Program

\$325

Rebuild Railroad Tracks and Bridges

\$135

Repairing Damage to General Aviation Airports

\$2.2

1. Estimates as of the 10/23/24 publication of the Preliminary Damage and Needs Assessment. New data received since have caused some estimates to change



# Department of Housing and Urban Development

Helene Federal Funding Request: \$5.68 billion

Other Storms Federal Funding Request: \$375 million

Source: NC Department of Transportation

## Helene Impact on Homes and Businesses<sup>1</sup>

**\$15.9B**

Business losses due to direct and indirect impacts

**500K**

Small businesses in disaster-declared counties

**\$9.6B**

Uninsured residential property losses

**151K**

Homes reporting damage as of November 9, 2024

**94%**

Share of households applying for IA with no flood insurance

## HUD Federal Funding Asks

Disaster

Purpose

Funding Ask (\$M)

Helene

*CDBG-DR Helene Request*

**\$5,580**

Housing Recovery

**\$3,400**

Economic Revitalization

**\$950**

Water Quality and Infrastructure

**\$850**

Rebuilding Private Roads and Bridges

**\$350**

Community College Workforce Management

**\$26**

Other Programs (Non – CDBG-DR)

**\$102**

**Other storms** CDBG-DR Unmet Florence & Matthew Recovery Needs **\$375**

1. Estimates as of the 10/23/24 publication of the Preliminary Damage and Needs Assessment. New data received since have caused some estimates to change



# Department of Homeland Security – FEMA

## Additional Federal Funding Request: \$1.75 billion<sup>1</sup>

Source: NC Department of Transportation

### Helene Impact Across Structures and Local Governments<sup>2</sup>

**39 of 100**

Counties in North Carolina with disaster declaration

**151K**

Homes reporting damage as of November 9, 2024

**\$4.8B**

Need for strengthening and mitigation across western North Carolina

### Expected Eligibility-Based Funding

	Individual Assistance (\$M)	Public Assistance (\$M)	Hazard Mitigation Assistance (\$M)
Received	\$228	\$197	-
Remaining	\$372	\$4,540	\$1,419
<b>Total</b>	<b>\$600</b>	<b>\$4,740</b>	<b>\$1,419</b>

### Additional HUD Federal Funding Asks

Purpose	Funding Ask (\$M)
Community Disaster Loan Program	\$1,750
National Dam Safety	Competitive

1. Does not include FEMA eligibility-based funding (IA, PA, and HMGP)

2. Estimates as of the 10/23/24 publication of the Preliminary Damage and Needs Assessment. New data received since have caused some estimates to change



# Department of Agriculture

## Federal Funding Request: \$1.67 billion

Source: NC Department of Public Safety

### Helene Impact on Agriculture<sup>1</sup>

**20K+**

Farms in disaster-declared counties

**\$2.0B**

Crop losses due to 2024 disasters including Helene, PTC-8, Debby, and historic droughts

**90-95%**

Crop losses not protected by insurance

**80%**

Crop nurseries destroyed

**\$1.2B**

Indirect and induced impact of Helene crop losses

**822K**

Acres of damaged timberland in western North Carolina

### USDA Federal Funding Asks

**Purpose**

**Funding Ask (\$M)**

Crop and Timber Loss Relief	\$1,150
Emergency Watershed Protection Program	\$337
Emergency Conservation Program	\$72
Emergency Forest Restoration Program	\$20
State, Private, and Tribal Forests	\$65
Rural Water and Waste Disposal Program	\$25

1. Estimates as of the 10/23/24 publication of the Preliminary Damage and Needs Assessment. New data received since have caused some estimates to change



# Small Business Administration

## Federal Funding Request: \$1.23 billion

Source: NC Department of Transportation

### Helene Impact on Small Businesses<sup>1</sup>

**115K**

Employer business establishments in disaster-declared counties

**384K**

“Mom and pop” businesses in disaster-declared counties

**\$10.0B**

Direct damages to businesses

**\$5.9B**

Indirect or induced damages to businesses

---

### SBA Federal Funding Asks

Purpose	Funding Ask (\$M)
Home and Personal Property Disaster Loan Program	\$931
Physical Damage Loans	\$175
Economic Injury Disaster Loans	\$125

1. Estimates as of the 10/23/24 publication of the Preliminary Damage and Needs Assessment. New data received since have caused some estimates to change



# Environmental Protection Agency

## Federal Funding Request: \$270 million

Source: NC Department of Transportation

### Helene Impact on Water and Waste Infrastructure<sup>1</sup>

**163**

Water and sewer systems damaged

**\$3.7B**

Direct damage to water, sewage, and stormwater systems

**400**

Hazardous waste facilities damaged

**\$96M**

Direct damage to hazardous waste and water treatment systems

---

### EPA Federal Funding Asks

Purpose	Funding Ask (\$M)
Clean and Drinking Water State Revolving Funds	\$250
Resource Conservation and Recovery Act and Comprehensive Environmental Response, Compensation, and Liability Act	\$20
Water Infrastructure Finance and Innovation Act	Competitive
State and Tribal Assistance Grant	Competitive
Section 319	Competitive
Additional Drinking Water Programs	Competitive
Brownfields and Land Revitalization Program	Competitive

1. Estimates as of the 10/23/24 publication of the Preliminary Damage and Needs Assessment. New data received since have caused some estimates to change





# Department of Defense – USACE

## Federal Funding Request: \$201 million

Source: North Carolina Department of Public Safety

### Helene Impact on Transportation Infrastructure and Dams<sup>1</sup>

**48%**

Share of roads in western North Carolina that are private

**\$460M**

Direct damage to private roads and bridges

**3-5K**

Private roads, bridges, and culverts damaged

**600**

High- or significant-hazard dams in western North Carolina

**88**

Dams needing repair or removal

---

### USACE Federal Funding Asks

**Purpose**

**Funding Ask (\$M)**

Water Infrastructure

\$130

Transportation Infrastructure Construction

\$50

Continuing Authorities Program

\$20

Planning Assistance to States

\$1

1. Estimates as of the 10/23/24 publication of the Preliminary Damage and Needs Assessment. New data received since have caused some estimates to change



# Department of Health and Human Services

## Federal Funding Request: \$150 million

Source: USCG Southeast

### Helene Impact on Health and Human Services<sup>1</sup>

<b>145</b> Healthcare facilities evacuated	<b>4,000</b> Children in foster care in disaster-declared counties	<b>\$128M</b> Direct and indirect damage to healthcare facilities	<b>55</b> Childcare centers with damage preventing reopening
---	---	--	---

### DHHS Federal Funding Asks

Purpose	Funding Ask (\$M)
Childcare and Development Block Grant	\$74
Low-Income Home Energy Assistance Program	\$44
Social Services Block Grant	\$14.9
Community Services Block Grant	\$10
Child welfare grant programs	\$4.5
Hospital Preparedness Program	\$3

1. Estimates as of the 10/23/24 publication of the Preliminary Damage and Needs Assessment. New data received since have caused some estimates to change



# Department of Commerce

## Federal Funding Request: \$126 million

Source: NC Governor Press Office

### Helene Impact on Businesses<sup>1</sup>

**45%**

Share of North Carolina GDP  
in disaster-declared counties

**\$15.9B**

Business losses due to direct  
and indirect impacts

**384K**

“Mom and pop” businesses  
in disaster-declared counties

---

### DOC Federal Funding Asks

Purpose	Funding Ask (\$M)
Economic Adjustment Assistance	\$75
Direct Small Business Recovery Loan Program	\$30
Workforce Training and Economic Diversification Initiatives	\$10
Emergency E-rate Program	\$10
Manufacturing Extension Partnership (MEP) Disaster Assessment Program	\$1
Distressed Area Recompete Pilot Program	Competitive

1. Estimates as of the 10/23/24 publication of the Preliminary Damage and Needs Assessment. New data received since have caused some estimates to change

# Department of Education

## Federal Funding Request: \$107 million

Source: OSBM

### Helene Impact on Education<sup>1</sup>

**\$844M**

Direct and indirect damage to educational institutions (as of 10/23/24)

**940K+**

Students impacted

**1,100+**

Public K-12 schools in disaster-declared counties

**50+**

Higher education institutions in disaster-declared counties

### ED Federal Funding Asks

Purpose	Funding Ask (\$M)
Temporary Emergency Impact Aid for Displaced Students	\$58
Immediate Aid to Restart School Operations (RESTART)	\$38
Assistance for Homeless Children and Youth Program	\$3
Emergency Assistance to Institutions of Higher Education	\$3
Federal Supplemental Education Opportunity Grant	\$3
Project School Emergency Response to Violence	\$1
Defraying Cost of Enrolling Displaced Students in Higher Education Program	\$1

1. Estimates as of the 10/23/24 publication of the Preliminary Damage and Needs Assessment. New data received since have caused some estimates to change

# Department of the Interior

## Federal Funding Request: \$90 million

Source: National Park Service

### Helene Impact on Public Lands<sup>1</sup>

**300K**

Acres of public land with reported damage

**\$2.6B**

Annual spending by NC national park visitors

**\$0.5-1.1B**

Estimated cost of reconstructing the Blue Ridge Parkway

**15%**

Federal share of total acreage in disaster-declared counties

### DOI Federal Funding Asks

**Purpose**

**Funding Ask (\$M)**

Flood Abatement and Water Quality Protection Measures

\$50

Mapping and Modeling

\$40

North Carolina asks that DOI prioritize the reconstruction of infrastructure and the restoration of national forests within Helene-damaged national parks – particularly the Blue Ridge Parkway, the majority of which remains closed in North Carolina as of November 7, 2024

1. Estimates as of the 10/23/24 publication of the Preliminary Damage and Needs Assessment. New data received since have caused some estimates to change

# Department of Energy

## Federal Funding Request: \$75 million

Source: NC Department of Transportation

### Helene Impact on Energy Infrastructure and Homes<sup>1</sup>

**\$1.4B**

Damage to electrical wiring and electrical infrastructure

**1M**

Customers experiencing power outages

**\$1.8B**

Need for weatherization and resiliency for homes

**4,300**

Homes in western North Carolina deferred for Weatherization Assistance Program

---

### DOE Federal Funding Asks

**Purpose**

**Funding Ask (\$M)**

Weatherization Readiness Fund

\$75

Clean Energy Financing Program

Competitive

1. Estimates as of the 10/23/24 publication of the Preliminary Damage and Needs Assessment. New data received since have caused some estimates to change



# Department of Labor

## Federal Funding Request: \$40 million

Source: NC Department of Transportation

### Helene Impact on Economy<sup>1</sup>

**\$13.1B**

Impact of business disruption

**\$2.8B**

Property damage to  
businesses and non-profits

**22K**

Unemployed due to Helene  
as of October 21, 2024

---

### DOL Federal Funding Asks

**Purpose**

**Funding Ask (\$M)**

Disaster Affected Workforce Training and Support

\$40

1. Estimates as of the 10/23/24 publication of the Preliminary Damage and Needs Assessment. New data received since have caused some estimates to change



# Department of Treasury

## Federal Funding Request: \$16.5 million

Source: NC Department of Public Safety

### Helene Impact on Housing availability<sup>1</sup>

**55%**

Low-income households that are cost burdened

**41%**

Households in disaster-declared counties earning less than 80% of the area's median income

**151K**

Homes reporting damage as of November 9, 2024

---

### USDT Federal Funding Asks

**Purpose**

**Funding Ask (\$M)**

Affordable Housing Construction and Rehabilitation

\$16.5

1. Estimates as of the 10/23/24 publication of the Preliminary Damage and Needs Assessment. New data received since have caused some estimates to change