

Demystifying Logic Models

Amy Salinas
CACconsulting@hotmail.com



Agenda

- 1. Let's start with a logic model check-in!**
- 2. What are logic models?**
- 3. Why are logic models important?**
- 4. How will the North Carolina Crime Commission use logic models?**
- 5. What's next?**

1

Logic Model Check-In

Chat Time

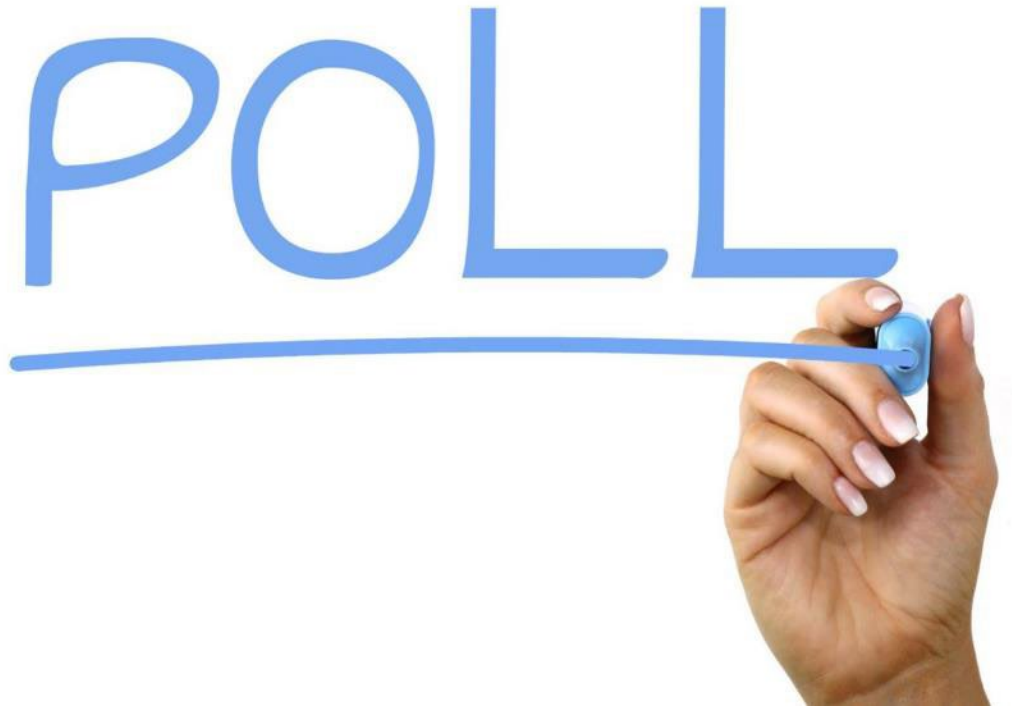
1. What is 1 word that comes to mind when you think about logic models?
2. What questions do you have or areas that always stump you when it comes to logic models?

<https://padlet.com/cacconsulting/rt7w0arpf2f3bhac>



What is your experience with logic models?

- 1 - Never heard of the term
- 2 - Some experience, but not much
- 3 - Experience but not totally comfortable with them
- 4 - Lots of experience and feel totally comfortable

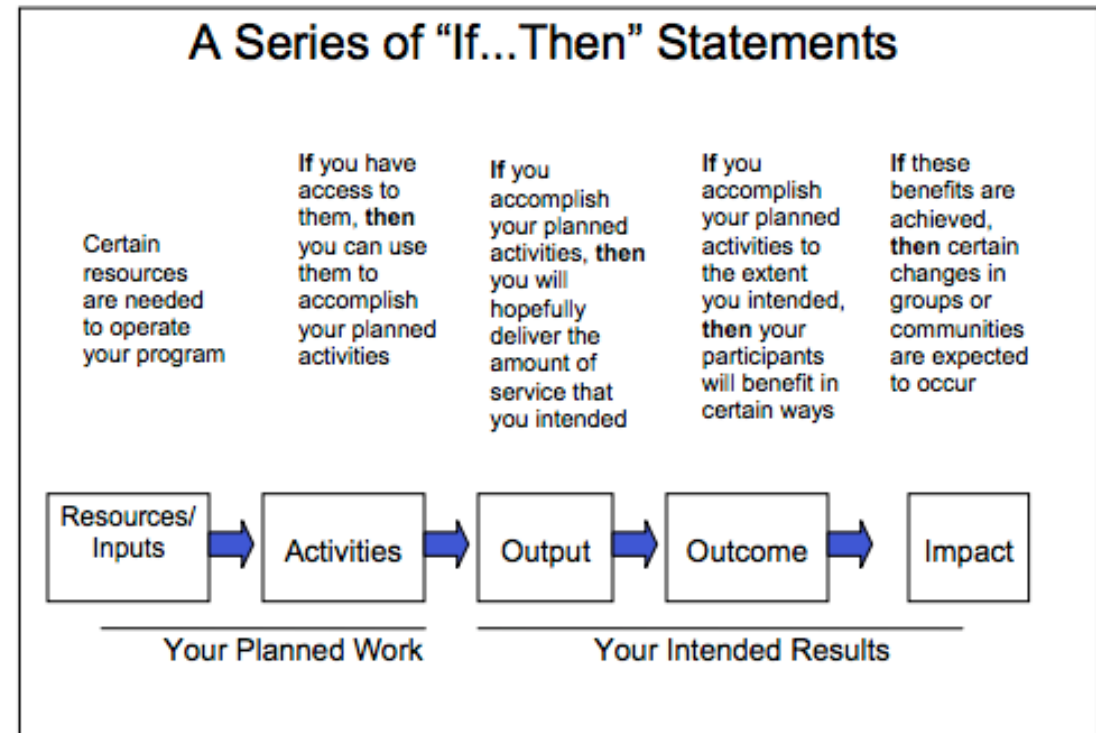


2

What are logic models?

Logic Model

- ❑ Visual Representation of Program Design
- ❑ Clearly articulates your program and its different elements/moving parts/elements that need to happen within your program:
 - will help to move the needle on the larger change efforts you are trying to achieve



Problem	INPUTS	ACTIVITIES	OUTPUTS	Outcomes		
				Short-Term	Medium-Term	Long-Term
Community problem(s) that the program activities are designed to address	What we invest	What we do	Direct products from program activities	Changes in knowledge, skills, attitudes, opinions	Changes in behavior or action that result from participants' new knowledge	Meaningful changes, often in their condition or status in life

Logic Model - Problems

- ? What is showing up as an issue that makes you think something needs to be done?
- ? What is happening in your community/communities that merits attention?
- ? How do you know? What information/data do you have? Is it current?



Compelling Community Problem

- Demonstrate there is a need in your community or communities.
 - Do you have data that demonstrates there is a problem? Is it compelling?

Logic Model - Activities

Activities

- ? What specifically will you do to address the problem?
- ? What is the specific target population to whom you are delivering the interventions?

**Activities
that address
the problem
and based in
evidence of
success**

- Well thought out plan on what you will do to address the problem
- Activities you propose should have some likelihood of working.

Logic Model - Activities

Examples:

- Crisis services
- Telephone hotlines
- Legal and court advocacy
- Medical and emergency room advocacy
- Individual counseling
- Support group services
- Shelter services
- Safety planning
- Referrals
- Transportation services
- Job counseling/training/placement
- Financial services
- Health education
- Educational outreach



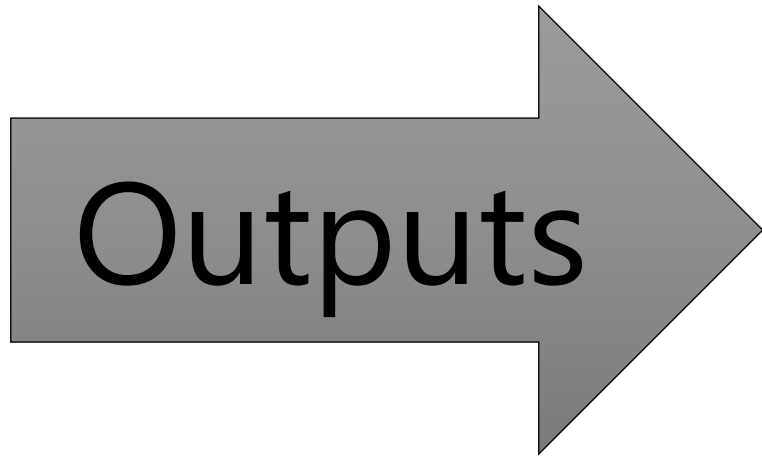
Logic Model - Activities

Dosage:

- **Duration** – i.e. total number of weeks, sessions or months of the intervention
- **Intensity** – i.e. number of hours per session
- **Frequency** – i.e. how often something happens i.e. number of sessions per week



Logic Model - Outputs



- Counts
 - Number of people served
 - Number of services delivered
 - Number of projects completed

Outputs

Answer the Questions:

“How much service did we perform?”

“What products did we develop?”

DO NOT answer the question:

“What changed as a result of the service provided or product developed?”



Logic Model - Outputs

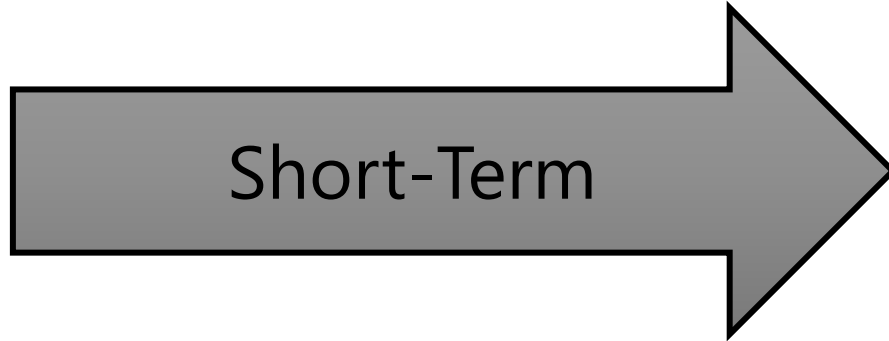
Examples:

- Clients served
- Referrals made
- Shelter services provided
- Hotline calls
- Hotline chats
- Staff trained
- Outreach events

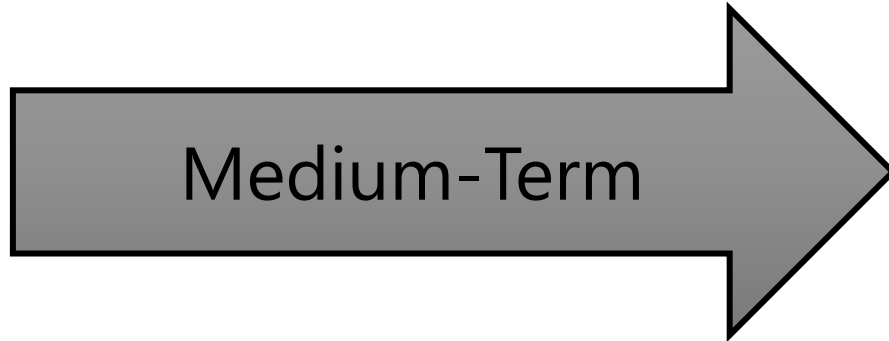


Logic Model - Outcomes

IMPACT



Changes in knowledge,
skills and/or attitudes



Changes in behavior or
actions

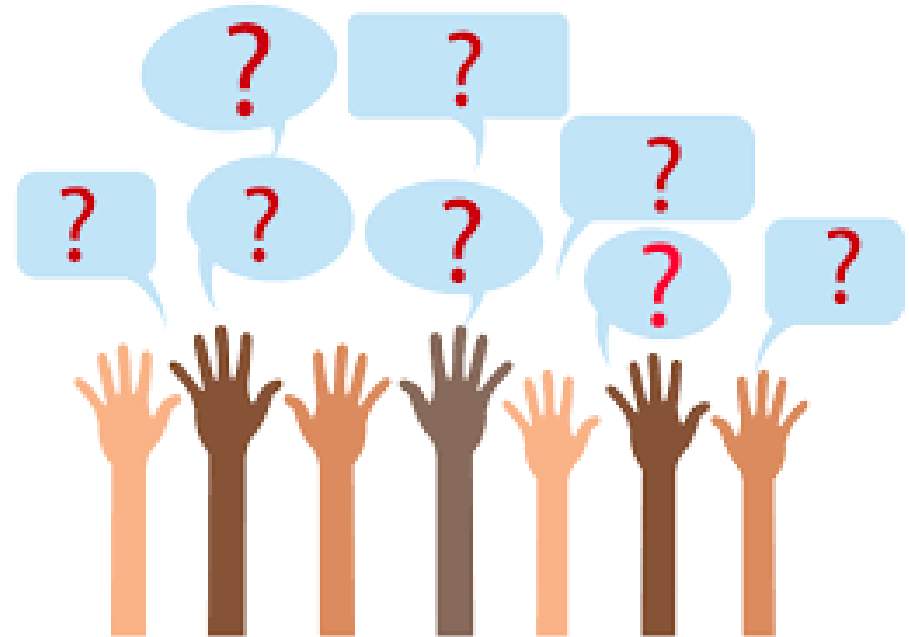


Changes in condition
or status in life

Outcomes

Answer the Questions:

- “What difference did our service make for beneficiaries?” or
- “How did the new system or product enhance the capacity of the organization to serve the community?”



Logic Model - Outcomes

Examples:

Short-term outcomes:

Self reported:

- awareness of rights or legal services
- understanding of personal relationships
- understanding of sexual exploitation
- satisfaction
- sense of safety
- Legal needs addressed

Examples:

Medium-Term Outcomes:

XX DV or SA victims who:

- Decrease risk-taking behaviors.
- Access help and resources as needed
- Engage in activities that help reduce stress levels.
- Secure safe housing.
- Implement safety protocols in times of crisis.
- Actively participate in longer term support services.

Examples:

Long-term outcomes:

Change in:

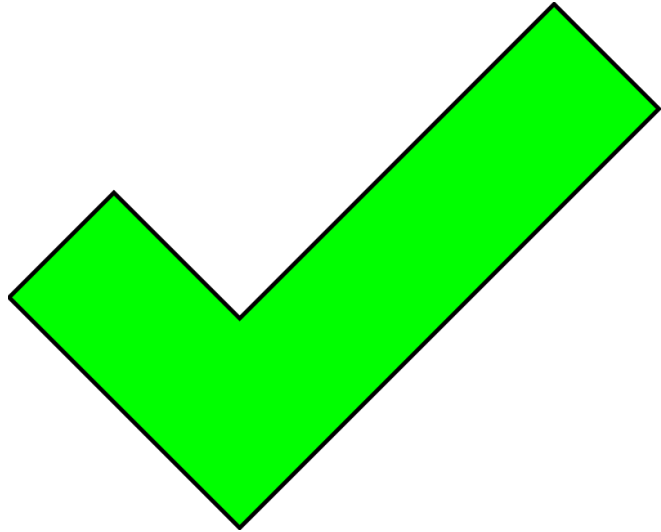
- Self-reported empowerment
- Safety and Stability
- Housing outcomes
- Immigration status
- Financial outcomes



Logic Model - Inputs



Logic Model



- Appropriate amount of detail and includes all key program components
- Depicts plausible relationships between program components
- Realistic
- Achieves consensus among your program's stakeholders that the model accurately depicts the program and its intended results

Logic Model

What is the desired long-term outcome?

Increase # of healthy families. ***But how?***

What is the desired intermediate outcome?

Increase # of families using healthy food practices. ***But how?***

What is the desired short-term outcome?

Individuals gain knowledge of healthy food choices. ***But how?***

What outputs are needed to achieve the outcomes?

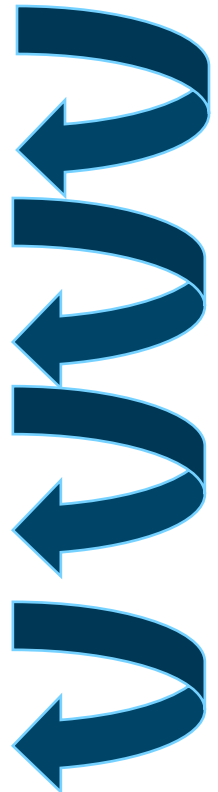
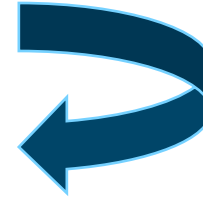
200 families complete an educational workshop. ***But how?***

What activities are needed to achieve the outcomes?

Conduct four educational workshops per month. ***But how?***

What inputs are needed to achieve the outcomes?

Funding, program staff, training, volunteers, research.





Questions?

3

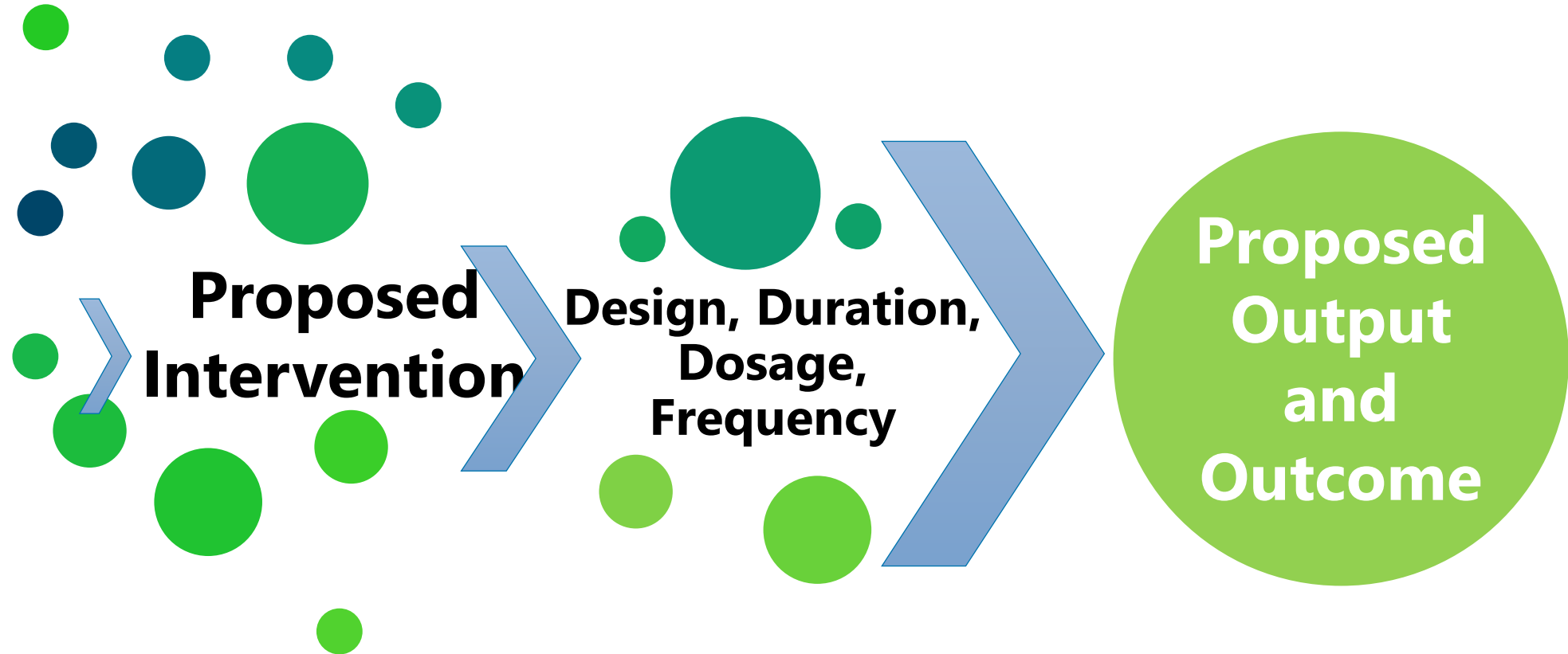
Why are logic models important?

**Demonstrate
impact &
evidence of
success**

Expectations:

- Strong Program Design
- Able to report on and document key indicators of success:
 - Output and Outcome
- Over Time - Lay a Strong Foundation of Evidence Programming

Evidence



Evidence – The Big Questions

- ✓ How did you determine what your organization will focus on?
- ✓ What demonstrates that the path you are taking will lead you to success and real change?
- ✓ What has worked successfully in the past that needs to continue?
- ✓ Where have existing interventions fallen short - are there modifications that need to be made for greater impact?
- ✓ What is the recommended design (specific program activities) and dosage (frequency, intensity, and duration) to achieve the intended outcome?
- ✓ Is there sufficient evidence for your intervention to continue its use?
- ✓ Do you need to choose a new intervention?



Goal



Regularly Collect and Look at Information that guides programmatic learning

- bring about positive changes in organizational practices;
- improve the quality of service provided to people, communities, people, and partners;

"The ultimate purpose of data collection should be focused on continuous learning and developing practices that move organizations toward greater effectiveness."

4

**How will the North Carolina Crime
Commission use logic models?**

Logic Model Integration

Feed Site Visits

Use it as a tool to ask questions, explore successes and challenges

Guide Technical Assistance

Help determine what targeted training and technical assistance is required to be successful

Support better program planning

Give you a framework

Foundation for Reporting

Step back and look at your logic model, you can determine what is best to collect data that report to your funder

Tool for Learning

Helps you assess what is working and is not

Overall Expectations

1. Strong logic models/program design
2. Able to report good data on counts/outputs and changes/outcomes
3. Use logic models as a tool for ongoing learning, program design adjustments
4. Use logic models as a foundation for what you will collect information on to better tell your impact story.





Questions?

5

What is next?



October

Provide a sample logic model and blank logic model

November – December, 2022

Logic Model Office Hours;
Small Group Support;
1-1 Reviews

January, 2023

Final Logic Models for year 3 are submitted

Demystifying Logic Models